

MuniGIS

Potential Services & Projects

- Paper Assessor Map Conversions & Annual Assessor Map Updates.
- GIS Data Development, Maintenance and Management.
- Map services for such things as Open Space & Recreation Plans, Master Plans, Grants, etc.
- Map support for departments and boards.
- Creating maps for use by municipal departments such as:
 - Road Maps, Zoning Maps, Open Space Maps
 - Housing Maps, Crime Data Maps, Water/Sewer Infrastructure, Digital Submission Reviews
 - Town Land Auction Maps, Town Boundary Walk Maps, DPW Plow Routes, etc.
- GIS Program Development & Guidance, both short and long term.
- GIS Field Collection
- GIS Software Training
- GIS Technical Support via phone and internet

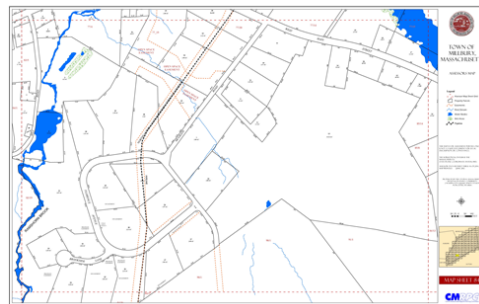


Affordable GIS Solutions for Municipalities

The CMRPC Municipal GIS Program (MuniGIS) is a regionalized approach that provides member communities with an affordable option for professional on-call GIS services. Participating communities are able to utilize CMRPC GIS staff to perform a wide variety of projects and services involving maps, data analysis and technical support.

By applying a regional approach to the cost of the program, CMRPC is able to reduce the individual cost per town to an affordable level. In addition to the low cost, participation in the program provides additional benefits to communities such as:

- Experienced professional GIS support
- Synergy with other planning projects
- Towns can contract directly with Regional Planning Agencies without going through a procurement process



Membership Options	Cost	Hours Available	Rate Per Hour
Tier 1	\$ 10,500	150	\$70
Tier 2	\$ 7,500	100	\$75
Tier 3	\$ 4,000	50	\$80
Tier 4	\$ 2,000	20	\$100

If a community exceeds their allotted hours, they will be charged at their membership rate

See other side for Program Conditions

ABOUT US

For over 20 years, CMRPC has been using Geographic Information Systems (GIS) to help both in-house staff and our member municipalities develop maps, create and maintain data, understand complex issues and improve decision making.

The GIS program has an extensive GIS library covering the CMRPC region and beyond. GIS staff maintain data provided by federal, state, municipal, and private sources, as well as custom data sets generated by commission staff.

Our GIS staff have worked on a wide variety of projects ranging in both size and complexity for both municipal and state entities. We can help member communities on a whole range of services such as maps for reports and presentations to developing/maintaining data layers. Some examples include town owned land auction maps, zoning maps, annual assessor map updates, build out analysis, and infrastructure mapping.

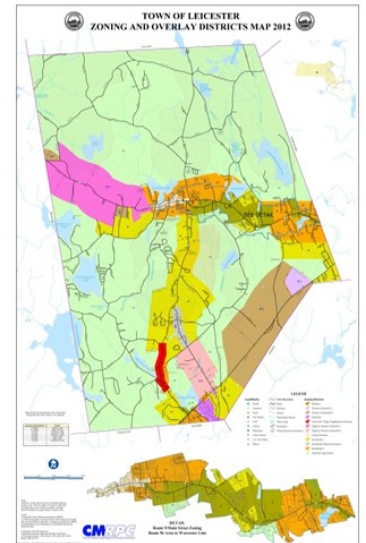
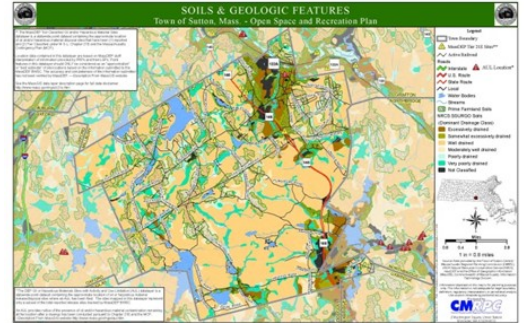
The GIS program can also provide technical support (via in person, phone, email) to member communities on the use of GIS software. GIS training can also be provided on the use of ESRI's ArcMap software, either one-on-one or in small groups.

MuniGIS

Affordable GIS Solutions for Municipalities

Program Conditions

- Member communities are given full access to CMRPC GIS staff and services but only for tasks for which CMRPC GIS staff has been trained and the equipped to perform.
- CMRPC is not responsible for the cost and/or purchasing of any software/equipment/licenses required to view, use or develop GIS products or services requested by a community. Examples include GPS units, aerial flyovers and GIS desktop software.
- For those communities who have in-house ESRI ArcMap Desktop software. Training sessions can be conducted for 1 to 2 people at a time unless enough software licenses are available for everyone and a suitable training location is available.
- GIS technical support via phone and internet available during normal CMRPC hours, 8:30am – 4:30pm. Onsite technical support can be arranged.



For more information, please contact

Connor Robichaud, Regional Projects Coordinator

crobichaud@cmrpc.org or (508) 459-3337

